



# Flexmls



## Trusted by over 150 MLSs, the Flexmls® platform is the leading\* MLS system.

Intuitive yet delightfully flexible, it's built for real estate professionals of all calibers.

Flexmls is designed with consistency in mind so professionals, and their clients alike, learn and master one system. From managing listings and contacts to searching, prospecting, and beyond - Flexmls empowers subscribers with efficient and custom workflows on any smartphone, desktop, or tablet.

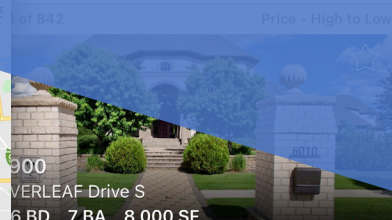
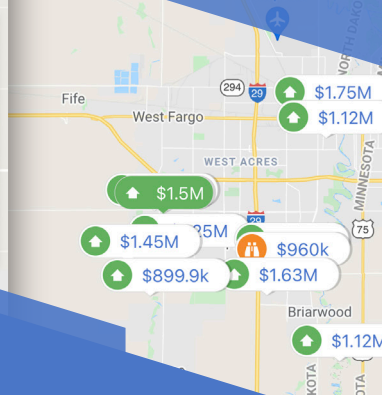
\*Ranked number one for overall platform performance and platform satisfaction on MLS Platform Study | T3 Sixty Research 2023

\$709,900



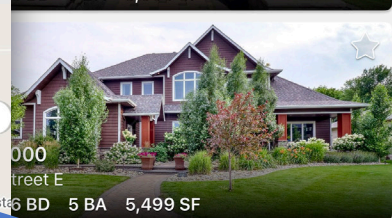
605 10TH Street N, Moorhead,...

Active (I) 4 BD 3 BA 3,200 SF



VERLEAF Drive S

6 BD 7 BA 8,000 SF



street E

6 BD 5 BA 5,499 SF

## Agent

Quick Launch: smart and powerful searching

Training your way: guided tutorials, videos, written

Robust client-agent engagement capabilities

Detailed insights on client activity (likes, views, shares...)

Member support with an average hold time of less than a minute

## Broker

Office Activity stats and reporting

Ability to manage Broker Distribution and Attribution

Add and edit listings as a team

## MLS Admin

Admin Module allows for platform changes without FBS involvement

Endless customizations to fit local market needs

99.9% uptime and system reliability

Proactive tools to support data integrity

Member insights and reporting



## FBS has been driving innovation in the MLS technology space for more than four decades.

The leading\* provider of MLS software, FBS is 100% employee-owned, allowing for an agile and adaptable approach to the ever-evolving technology landscape.



### Partners in Success

All-in on the MLS: 100% focused on supporting the MLS value proposition

With its ownership structure, each employee has the autonomy to ensure client-partner success

Invested in industry standards, supports MLS innovation and data portability



### Team Behind the Company

Experienced and informed: average employee tenure of 7.5 years

Dedicated support teams for both Admins and Subscribers

Nationally recognized for choosing greatness over growth